

ANDLY

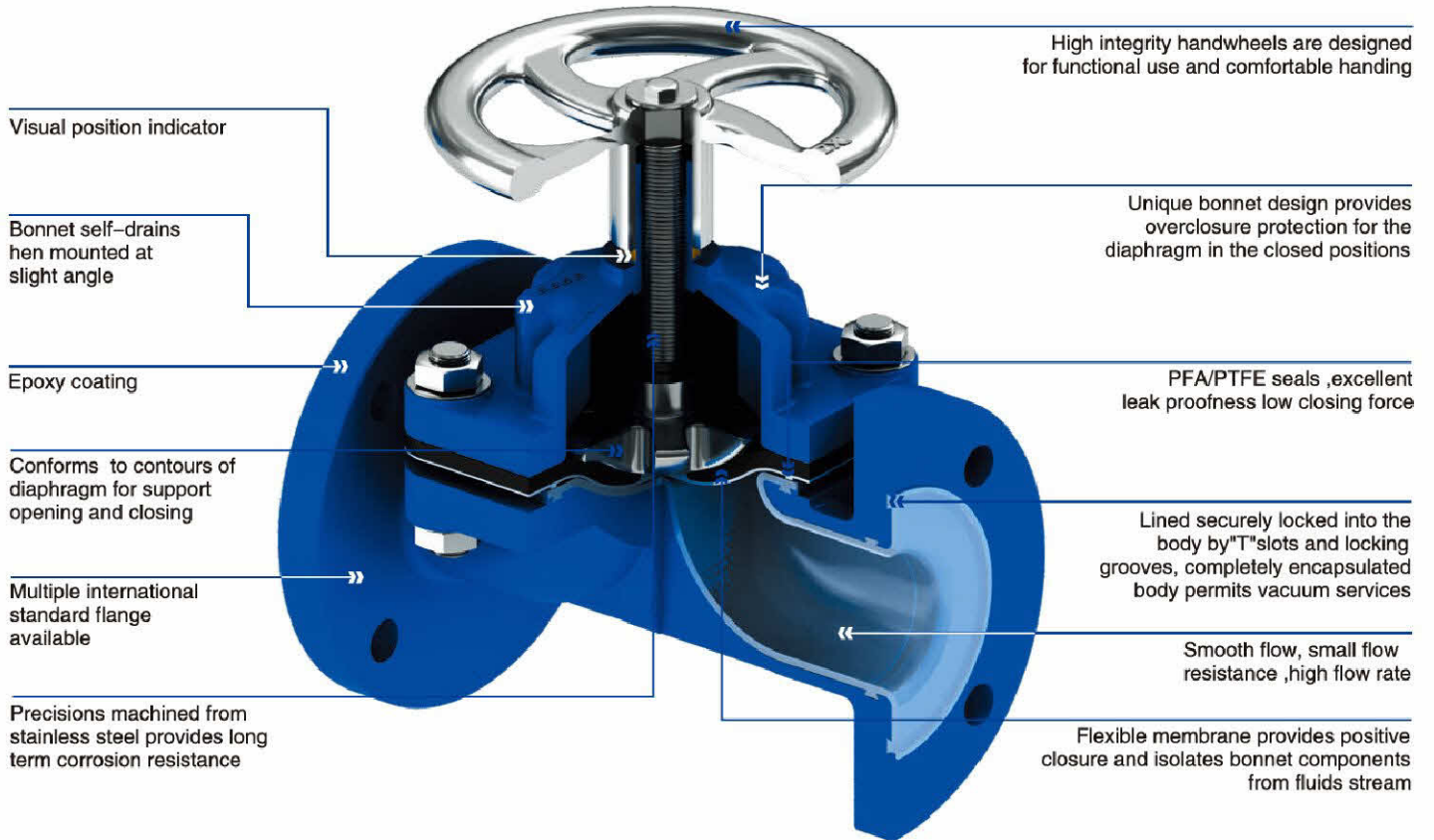
## Product Catalogue

# Lined Diaphragm Valve DPL1 Series

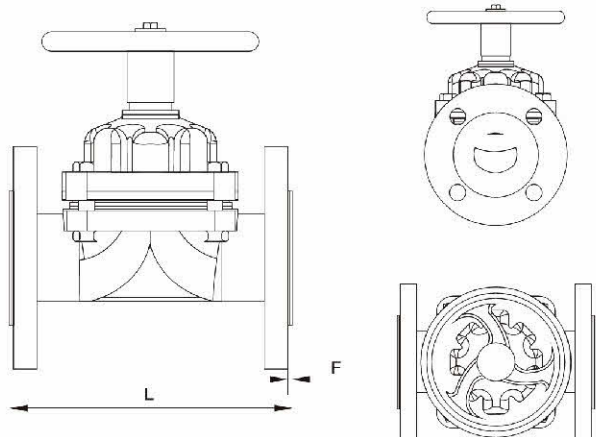
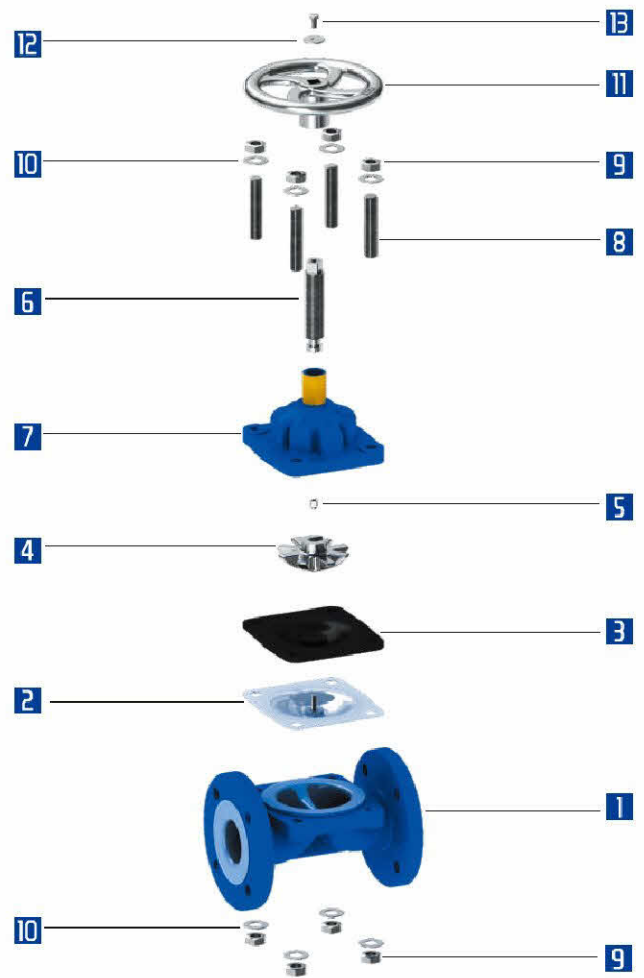


ANDLY 株式会社  
ANDLY Co., Ltd.

## DPL1 Series Lined Diaphragm Valve



Working pressure	0.1mbar~16 bar
Temperature range	-20° C ~ 200° C according to working conditions, other temperatures on request.
Design and Manufacture	MSS SP-88
Face to Face	
Flange Ends	ASME B16.5 DIN 2532 JIS B2212
Visual Inspection	MSS Sp54
Testing	API 598 DIN 12569 JIS B2003
Pressure & Temperature	ASME B16.34
Operator Type	Hand wheel/Pneumatic
Spark testing	14kv



## DPL1 Series MATERIALS SELECTION

No	Name	Qty.	Materials	Materials		
				ASTM	JIS	DIN
1	BODY	1	Carbon Steel+PFA/FEP/ETFE	A216-WCB	G5151 SCPH2	GS-45(1.0446)
			Stainless Steel+PFA/FEP/ETFE	A351-CF8	G5121 SCS13A	G-X6CrNiMo1810
			Ductile Iron+PFA/FEP/ETFE	ASTM A395	FCD400	GGG-40 ( 0.7040)
2	DIAPHRAGM	1	PFA/PTFE	-	-	-
3	CUSHION RUBBER	1	NBR	-	-	-
4	COMPRESSOR	1	Carbon Steel	A216 WCB	G5151-SCPH2	GS-C25N DIN 17245
5	LINK BLOCK	1	Stainless Steel	A 182 F304	G4303-SUSF304	X5CrNi18 10 DIN 17440
6	SPINDLE	1	Stainless Steel	A 182 F304	G4303-SUSF304	X5CrNi18 10 DIN 17440
7	BONNET	1	Carbon Steel	A216-WCB	G5151 SCPH2	GS-45(1.0446)
			Stainless Steel	A351-CF8	G5121 SCS13A	G-X6CrNiMo1810
			Ductile Iron	ASTM A395	FCD400	GGG-40 ( 0.7040)
8	STUD BOLT	4	Stainless Steel	A 182 F304	G4303-SUSF304	X5CrNi18 10 DIN 1.4301
9	HEX NUT	8	Stainless Steel	A 182 F304	G4303-SUSF304	X5CrNi18 10 DIN 1.4301
10	WASHER	8	Stainless Steel	A 182 F304	G4303-SUSF304	X5CrNi18 10 DIN 1.4301
11	HAND WHEEL	1	Stainless Steel	A 182 F304	G4303-SUSF304	X5CrNi18 10 DIN 1.4301
12	WASHER	1	Stainless Steel	A 182 F304	G4303-SUSF304	X5CrNi18 10 DIN 1.4301
13	WRENCH BOLT	1	Stainless Steel	A 182 F304	G4303-SUSF304	X5CrNi18 10 DIN 1.4301

## DPL1 Series DIMENSION

(Unit:mm)

DN	NPS	ASME B16.5		JIS B2212 10K DIN2532 Pn10		BS 5156		Weight [kg]	CV
		L	f	L	f	L	f		
mm	in								
15	½	108	3	130	3	108	3	3.5	10
20	¾	146	3	150	3	117	3	4	12
25	1	146	3	160	3	127	3	5.5	17
32	1¼	159	3	180	3	146	3	8	27
40	1½	175	3	200	3	159	3	11	39
50	2	200	3	230	3	190	3	14	70
65	2½	226	3	290	3	216	3	23	125
80	3	260	4	310	4	254	4	29	180
100	4	327	4	350	4	305	4	46	305
125	5	400	4	400	4	356	4	70	412
150	6	480	4	480	4	406	4	90	712
200	8	600	4	600	4	521	4	160	1011
250	10	730	4	730	4	635	4	230	1840
300	12	850	5	850	5	749	5	320	2435

承同創興

ANDLY

ANDLY Co., Ltd.

4-3-37,TATSUMI-HIGASHI,IKUNO-KU,  
OSAKA-CITY,OSAKA,544-0014 JAPAN

URL: [www.andly.jp](http://www.andly.jp)

TEL: +81-06-7509-4724

